

# Chuckery Primary School Weekly Newsletter



Friday 10<sup>th</sup> February 2023 – Issue 20

## Attendance

Overall, our attendance this week was 95.3%  
Our target this year is 96%.

Every week that a class has attendance above 96% they will get a £1 credit towards a treat of their choice. This rises to £5 if the class attendance is above 98% and £10 if the whole class attendance is 100%.

The only way to earn these treats is to come to school every day. Please remember, **1 child, missing 1 day reduces the class attendance by 1.5%**

## Class credit award

Greater than 96% Class 6, 9, 13	£1.00
Greater than 98% Class 10, 14, 15	£5.00
100% Class 11	£10.00
Well done!	

## News

### Reward Certificates - What Have You Done Today to Make You Feel Proud?

Our Praise Assemblies are held every Friday at 2.30pm we look forward to welcoming any parents who wish to attend.

If your child receives a Head teacher Award during the week, we will send you a message so you can come and join the celebration if you wish.

**Class 4: Logan**

**Class 7: Reuben**

**Class 8: Luca**

**Class 10: Asma, Ondrej, Zayaan**

**Class 12: Hawa, Cody**

**Class 15: Gislem, Brandon**

## Art Recognition Award

**Class 8: Tavleen**

## Governors

Over the next few months our School Governors will be introducing themselves on our newsletter.



I'm Annika Spalding and I've been a school governor for a year. It's been a great way to truly understand how the school works behind the scenes, including the efforts made to provide an

impactful education for children.

It's likely you'll have seen me (red glasses and bright red lipstick!) in the playground as my youngest daughter is currently in Year 6 at Chuckery.

I always loved reading and writing as a child, and both interests are still a very big part of my life today.

I work part-time as a copywriter for an education charity. I'm also part-time self-employed as a communications consultant for charities, and an award-winning author. I'm a member of Writing West Midlands' Room 204 Writer Development Programme, and a member of the Society of Authors.

I also deliver creative and therapeutic writing workshops that focus on healing, self-care, and personal development, often independently and by commission. I'm very passionate about it.

In the past I've worked as a Community Outreach Worker, Helpline staff, Children and Family Support Worker in refuge, and a Communications Officer, mostly for women's charities. I've also worked as a family support worker in a children's centre.

As a governor, it's important that I get to know our school community – this means pupils, teachers, and families. So, if you see me around, please don't be afraid to say hello

## NEU Action

Further action is planned for Wednesday 1st March, Wednesday 15th March and Thursday 16th March, we have postponed the Staff Training Day planned for Monday 27th February 2023. It will now take place on Friday 17th March 2023. We have done this to try to keep disruption to a minimum as if the action goes ahead, we are likely to see most year groups closed again on these days.

## Curriculum Enhancement and Outdoor learning – Spring Term

Every child will work with Mr Bamber, our Curriculum Enhancement and Outdoor learning teacher, during the spring term.

The plan this term is:

**Wb: 6<sup>th</sup> February** – Reception at Dudley Zoo

**Wb: 13<sup>th</sup> February** - Year 6, residential at Laches Wood

**Wb: 27<sup>th</sup> February** - Year 3 Edible Garden (in school)

**Wb: 6<sup>th</sup> March** – Year 5 Explorers including camp in school

**Wb: 13<sup>th</sup> March** - Year 1, The Train  
**Wb: 20<sup>th</sup> March** - Year 4 residential at  
Castleton  
**Wb: 27<sup>th</sup> March**  
Year 2 Birmingham Botanical Gardens  
Year 4 MAC Theatre

### Attendance

Parents whose children's attendance has fallen below 93% will have either received, or will be receiving, letters in the next few days. Please remember your child should be in school every day unless they are **very ill**. All children are expected to be in school for at least 96% of the time and if attendance falls below 93% the school will begin monitoring process which could lead to legal action if attendance does not improve.

### Application for free School Meals and/or Early Years Pupil Premium

If you think you are entitled to free school meals or early years pupil premium please click the link below

<https://forms.walsall.gov.uk/Application-for-free-school-meals-and-or-Early-Years-Pupil-Premium/Application-for-Free-School-Meals>

### Cost of living support

Walsall Council have put together some information about where and how to find support across the Walsall borough. Please use the link below to access the website:  
[https://go.walsall.gov.uk/benefits\\_and\\_cost\\_of\\_living\\_support/help\\_with\\_the\\_cost\\_of\\_living](https://go.walsall.gov.uk/benefits_and_cost_of_living_support/help_with_the_cost_of_living)

### Bad Weather

I am hopeful that there will be no occasions this year when it is necessary to close the school for bad weather. However, if such a decision is needed because of heavy snow or other unforeseen circumstances, we will let parents know the school is closed by 8am at the latest. This will be done by:

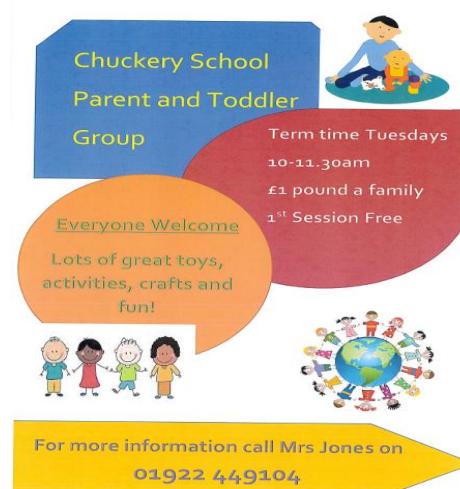
- Sending a text message to all parents (please make sure the office have your current mobile phone number)
- Posting a message on the school website ([www.chuckeryprimaryschool.co.uk](http://www.chuckeryprimaryschool.co.uk))
- Posting a message on our official Facebook page - Chuckery Primary School Official.
- Posting a tweet on our official school Twitter page - @chuckeryprimary

### Questions, comments and complaints

Parents can email general questions to the school by using [postbox@chuckery.walsall.sch.uk](mailto:postbox@chuckery.walsall.sch.uk) or questions for the head teacher to [jpearce@chuckery.walsall.sch.uk](mailto:jpearce@chuckery.walsall.sch.uk). Our complaints Policy is on the school website. It can be found at <https://www.chuckeryprimary.com/charging-and-complaint-policies/>

### Parent and Toddler Group

The session is for pre-school age children and their parents. Each session will be in our Infant Hall and will run from 10am until 11:30am. This is a great opportunity to meet other parents and some of our staff. Please speak to Mrs Jones for further information. We look forward to seeing you there!



### Important Dates

**Friday 17<sup>th</sup> February 2023** – Break up for half term holiday  
**Monday 27<sup>th</sup> February** – School Re-opens  
**Wednesday 1<sup>st</sup> March 2023** - NEU day of action – Potential full or partial closure  
**Wednesday 15<sup>th</sup> March and Thursday 16<sup>th</sup> March** NEU day of action – Potential full or partial closure  
**Friday 17<sup>th</sup> March** – Staff Training Day  
**Friday 31<sup>st</sup> March** - Break up for the Easter holiday  
**Monday 17<sup>th</sup> April** – All children return to school